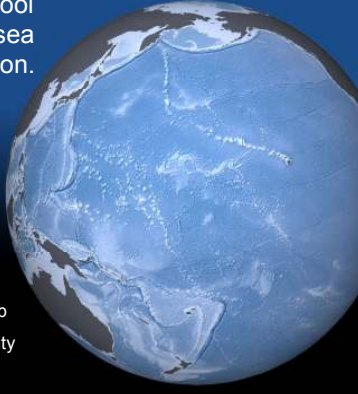


OBIS-SEAMAP & SWOT information systems: A tool for exchanging data on sea turtles in the IOSEA region.

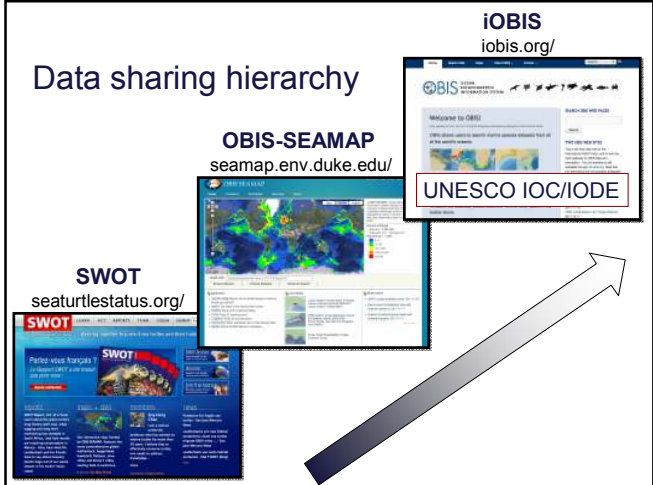
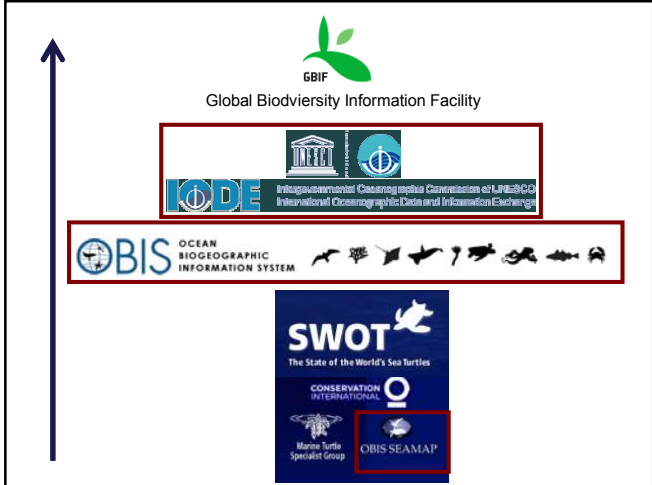


Prof. Pat Halpin
OBIS-SEAMAP
Marine Geospatial Ecology Lab
Nicholas School, Duke University

OBIS OCEAN BIOGEOGRAPHIC INFORMATION SYSTEM

Topics:

- Introduction to international data sharing systems: SWOT, OBIS-SEAMAP, and iOBIS;
- Relevant tools & technologies for the IOSEA region;
- Emerging regional planning initiatives: CBD – EBSA planning process
- Summary


OBIS OCEAN BIOGEOGRAPHIC INFORMATION SYSTEM

>30,000,000 records

Welcome to OBIS!

OBIS allows users to search marine species datasets from all of the world's oceans.

With our evolving OBIS database repository, users can identify biodiversity hotspots and large-scale ecological patterns, analyze dispersions of species over time and space, and plot species' locations with temperature, salinity, and depth.

To search the database, please select the "Search Data" option in the toolbar above.


SEARCH OBIS WEB PAGES

TWO OBIS WEB SITES

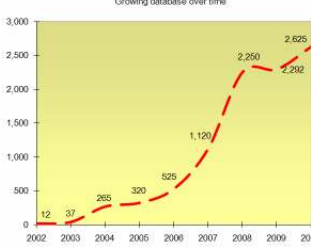
RECENT NEWS

OBIS-SEAMAP

The largest protected species data archive combined with online mapping & visualization tools



**411 datasets
1935 – 2012
>2,800,000 records**



Year	Records
2002	12
2003	37
2004	265
2005	320
2006	625
2007	1,120
2008	2,250
2009	2,282
2010	2,825

National Science Foundation
NOPP

Best Conservation Map 2011

IOSEA Region focal area

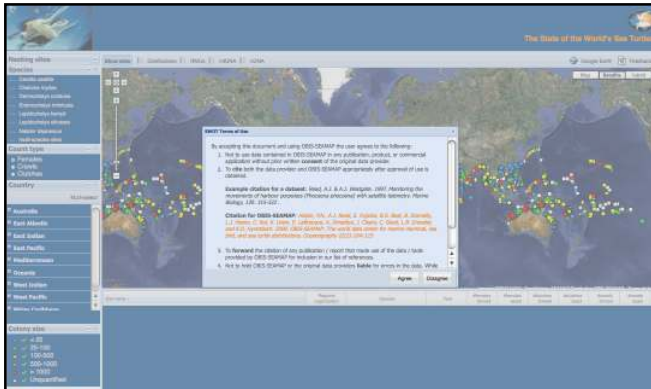
SWOT — the State of the World's Sea Turtles — is a partnership led by the Sea Turtle Flagship Program at Conservation International (CI), the IUCN Marine Turtle Specialist Group (MTSG), and supported by the Marine Geospatial Ecology Lab (MGEL) at Duke University.

However, *the lifeblood of the effort is the network of more than 550 people and projects that contribute data to the SWOT database...*

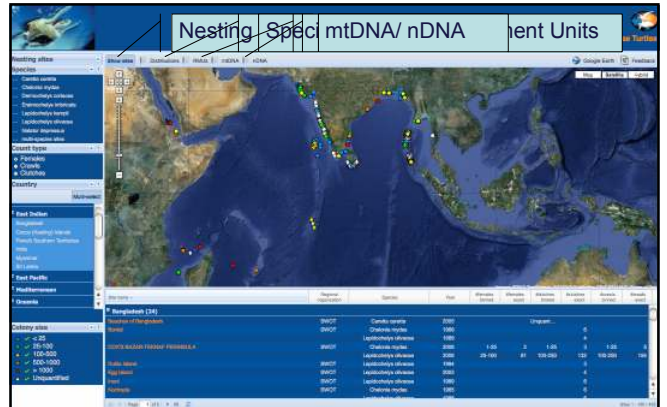
OBIS OCEAN BIOGEOGRAPHIC INFORMATION SYSTEM

Topics:

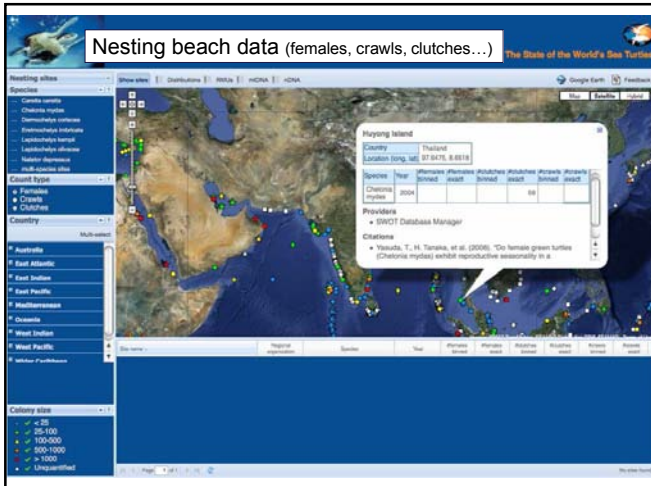
- Introduction to international data sharing systems: SWOT, OBIS-SEAMAP, and iOBIS;
- Relevant tools & technologies for the IOSEA region;
- Emerging regional planning initiatives: CBD – EBSA planning process
- Summary



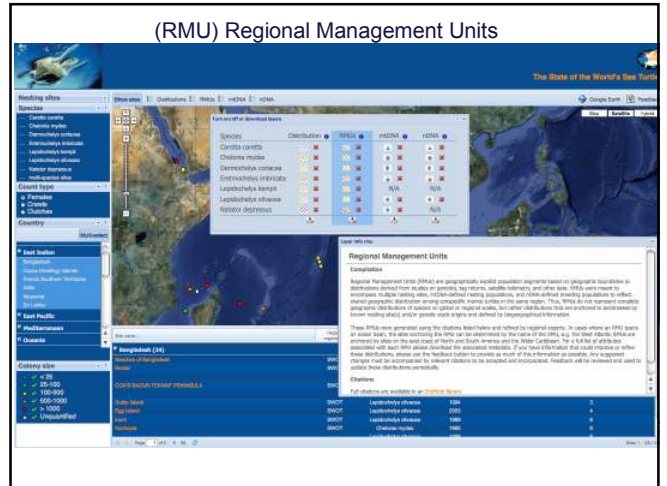
Data sharing: requires responsible usage
Terms of use agreement



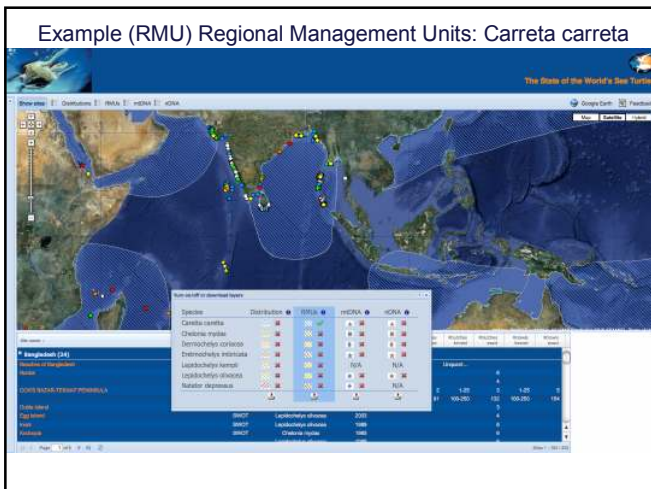
Specific tools & data collection



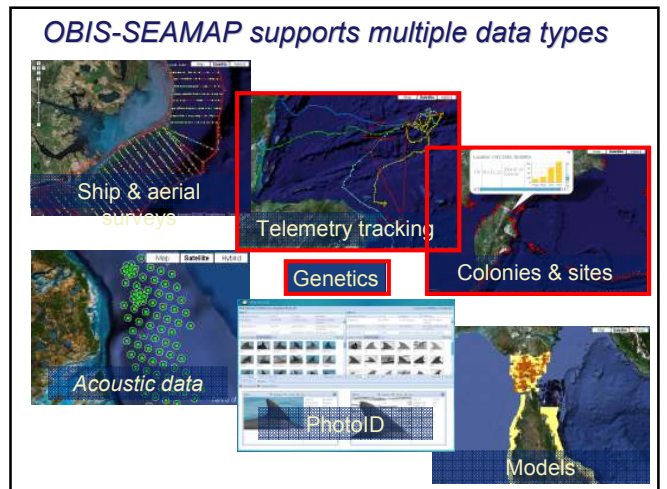
Nesting beach data (females, crawls, clutches...)



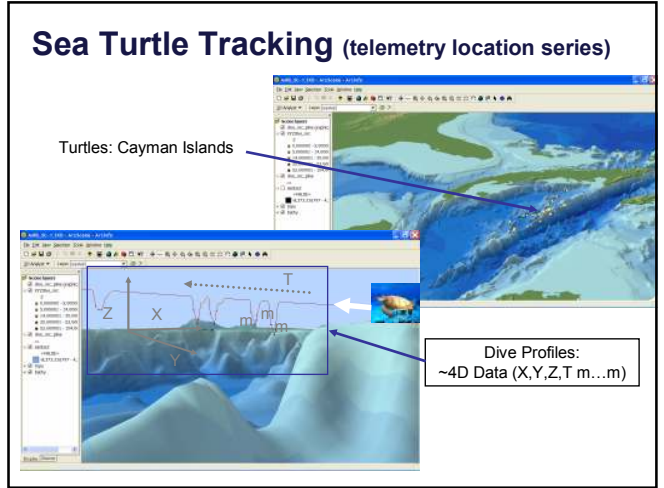
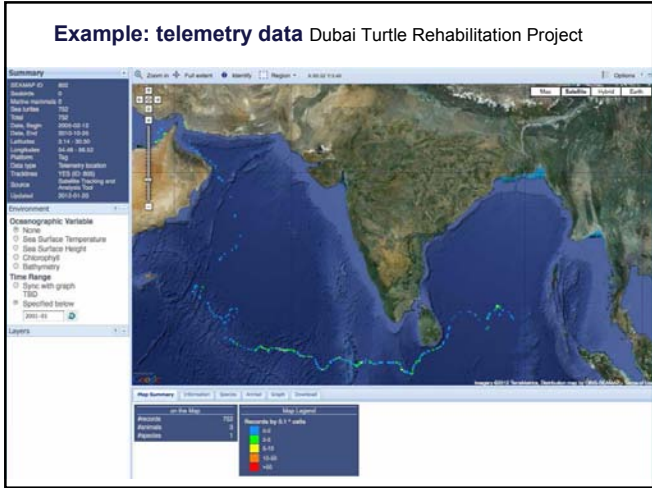
(RMU) Regional Management Units



Example (RMU) Regional Management Units: Carretta carretta



OBIS-SEAMAP supports multiple data types



OBIS OCEAN BIOGEOGRAPHIC INFORMATION SYSTEM

Topics:

- Introduction to international data sharing systems: SWOT, OBIS-SEAMAP, and iOBIS;
- Relevant tools & technologies for the IOSEA region;
- Emerging regional planning initiatives: CBD – EBSA planning process
- Summary

Convention on Biological Diversity

COP 10 MOP 5
Nagoya, Japan 2010
Life in Harmony, into the future
いのちの共生を、未来へ

CONFERENCE OF THE PARTIES TO THE CONVENTION ON BIOLOGICAL DIVERSITY
Tenth meeting
Nagoya, Japan, 18-29 October 2010
Agenda item 5.2

MARINE AND COASTAL BIODIVERSITY
Decision as adopted

10. encourages Parties, other Governments and organizations to further enhance globally networked scientific efforts, such as the Census of Marine Life (CoML) and the ***Ocean Biogeographic Information System (OBIS)***, to continue to update a comprehensive and accessible global database of all forms of life in the sea, and further assess and map the distribution and abundance of species in the sea,...

Ecologically or Biologically Significant Areas (EBSAs): Criteria

1. Uniqueness or rarity ←
2. Special importance for life history of species ←
3. Importance for threatened, endangered or declining species and/or habitats ←
4. Vulnerability, fragility, sensitivity, slow recovery
5. Biological productivity
6. Biological diversity
7. Naturalness

2008 COP9 criteria established

Building capacity for Parties to develop an EBSA inventory

Convention on Biological Diversity

COP 10 MDP 5
Nagoya, Japan 2010
Life in Harmony, into the future
いのちの共生を、未来へ

EBSA Regional Workshops 2011 - 2012

Future Indian Ocean regional EBSA identification process

OBIS OCEAN BIOGEOGRAPHIC INFORMATION SYSTEM

Topics:

- Introduction to international data sharing systems: SWOT, OBIS-SEAMAP, and iOBIS;
- Relevant tools & technologies for the IOSEA region;
- Emerging regional planning initiatives: CBD – EBSA planning process
- Summary

SWOT The State of the World's Sea Series

Summary / Take-home Messages

- OBIS-SEAMAP specializes in R&D for the synthesis and analysis of marine biological data;
- The SWOT & OBIS-SEAMAP programs would like to increase our collaborations in the IOSEA region;
- The CBD - EBSA process will likely focus on the Indian Ocean region in the future.

Indian Ocean - South East Asian Marine Turtle Memorandum of Understanding

Encourage strengthened partnerships and collaboration between IOSEA and the SWOT / OBIS-SEAMAP teams.

Thank you!